

Operations Manual

Vantage CS - Clamshell Grill

Model #: CSD1515



PROLUXE
WWW.PROLUXE.COM

Version: 122820

Congratulations on your selection of the Vantage CS Clamshell Grill.

Proluxe is a leading manufacturer of food preparation and cooking equipment designed for the most demanding commercial kitchens. Proluxe equipment is a result of the highest quality engineering and time-tested design.

This manual includes installation, operation, and maintenance procedures for your new clamshell grill. Please read this manual carefully and keep it with your machine for proper operation and lasting service.

Electrical:

120V/50-60Hz/220W/18.3 Amps
1 phase

Also available; specify when ordering:

- Voltage: 120/208/220
- Amps: 18.3/10/13.5
- Watts: 2200/2800

Includes: 72" cord and 6-30P NEMA approved plug.

Controlled heating zones: 3

Shipping Weight:
78lbs. (35kg)

GETTING STARTED

Please read carefully before attempting to use this appliance.

1. Place in location where it will be used allowing for clearances per the dimensions indicated. Allow 2" minimum clearance between adjacent equipment and/or wall areas.
2. Plug into proper 3 prong wall outlet. If other appliances are connected to the same circuit make sure the total load does not exceed a maximum ampacity of the circuit. Electrical information is as follows:
3. Press the power button, the green light above will illuminate when powered on. The display flashes and shows left preset timer during warm-up. Preheat time will be approximately 40-50 minutes. When the set point is reached, the display stops flashing and beeps 3 times.
4. Simply place product on either side of the grill, close lid and press the desired preset time cycle 10 or 20 seconds. After the time cycle is finished press it again to reset the time cycle.

INTERNATIONAL SYMBOLS

Symboles internationaux



Power Off
éteindre



Power On
allumer



Hot Surface
surface chaude



Risk of Electrical Shock
Risque de choc électrique



Protective Earth Terminal
Borne de terre de protection



Caution - Warning
chaud - avertissement

SAFETY SUMMARY



Warning

To reduce the risk of electrical shock, do not remove or open cover. No user-serviceable parts inside. Refer servicing to qualified personnel.

Avertissement

Pour réduire le risque de choc électrique, ne pas retirer ou couvercle ouvert Aucune pièce réparable par l'utilisateur, reportez-vous à du personnel qualifié.



Warning

In case of power cord damage, do not attempt to repair or replace the power cord. Please contact the manufacturer or the local distributor.

Avertissement

Pour une protection continue contre l'incendie et de choc électrique, remplacer avec le même type et calibre du fusible. Mis fusible supplémentaire nominale max 3A, 120 Vac.



Warning

For continued protection against fire and electric shock, replace with the same type and rating fuse. Listed Supplemental Fuse rated max 3A, 120Vac.

Avertissement

Pour une protection continue contre l'incendie et de choc électrique, remplacer avec le même type et calibre du fusible. Mis fusible supplémentaire nominale max 3A, 120 Vac.



Caution Hot

Avoid touching hot surfaces while operating the machine.

Attention à chaud

Évitez de toucher les surfaces chaudes lorsque vous utilisez la machine.



Caution

When servicing or cleaning the machine, make sure that the power cord is removed from the wall socket.

During normal operation, the base of the machine must be installed or placed above the wall socket.

Avertissement

Lors de l'entretien ou du nettoyage de la machine, assurez-vous que le cordon d'alimentation est débranché de la prise murale.

TEMPERATURE/TIMER SETTINGS

How to Find Set Temperature

To find the temperature of upper platens:
Press and hold the TEMP button and the arrow up (↑) button at the same time.

To find the temperature of bottom platens:
Press and hold the TEMP button and the arrow down (↓) button at the same time.

Adjusting the Set Temperature

1. Press and hold the TEMP button and the arrow up (↑) button at the same time for 15 seconds.
2. The current temperature with display on the right digital display screen only.
3. Using the up (↑) and down (↓) adjust the temperature to your desired setting.
4. Once your desired temperature is set, push the TEMP button to return.

Adjusting the Set Time

1. Press the TEMP button first and then select the desired timer button and hold for 5 seconds.
2. The current temperature with display on the right digital display screen only.
3. Using the up (↑) and down (↓) adjust the timer to your desired setting.
4. Once your desired temperature is set, push the TEMP button to return.

Note: When adjusting the timer settings, the right set of buttons control the left side. Your left side timer will automatically set to

your right control settings. If you desire a separate left timer you can manually adjust the left side timer without affecting the right timer.

CLEAN CYCLE

Start Cycle

To start a clean cycle, push CLEAN button once so the CLEAN LED light is turned on. All preset LED's are turned off, and the temperature set point is changed to the clean set point of 275°F. This also initiates the cool down to clean set point condition as well the display starts flashing until the clean set point is reached.

Stop Cycle

To stop the clean cycle, simply press the CLEAN button once to deactivate the clean cycle. The CLEAN LED is turned off, the preset LED's are restored, the temperature set point is changed to the main set point. Again, the warm-up condition is initiated and the display flashes until the cook set point is reached.

Change Clean Temp

275°F is the factory default temp for the CLEAN cycle. To change the CLEAN cycle temp, simultaneously hold down the TEMP and CLEAN buttons for 15 seconds. The current temp setting will display on the right digital display only. Using the up or down arrows to adjust to the desired temp.

PREVENTATIVE MAINTENANCE

Proluxe machines are relatively maintenance free. For a long lifespan, the following preventative maintenance should be followed:

Daily Care:

1. Platens: Turn your machine off and allow to cool down before attempting to clean. These platens should only be cleaned with mild soap and warm water then wiped off with a clean, soft cloth or soft sponge.

2. Exterior surfaces: Wipe daily with mild soap and warm water.

DO NOT use ice or cold water to cool the unit down. This can cause platens to warp.

Service Problems:

Contact our factory at (800) 624-6717 (U.S. only) or approved service agency. When contacting the factory for information, parts or service instructions, please provide the serial number of the machine be provided. This number can be found on the serial plate located on the rear of the machine.

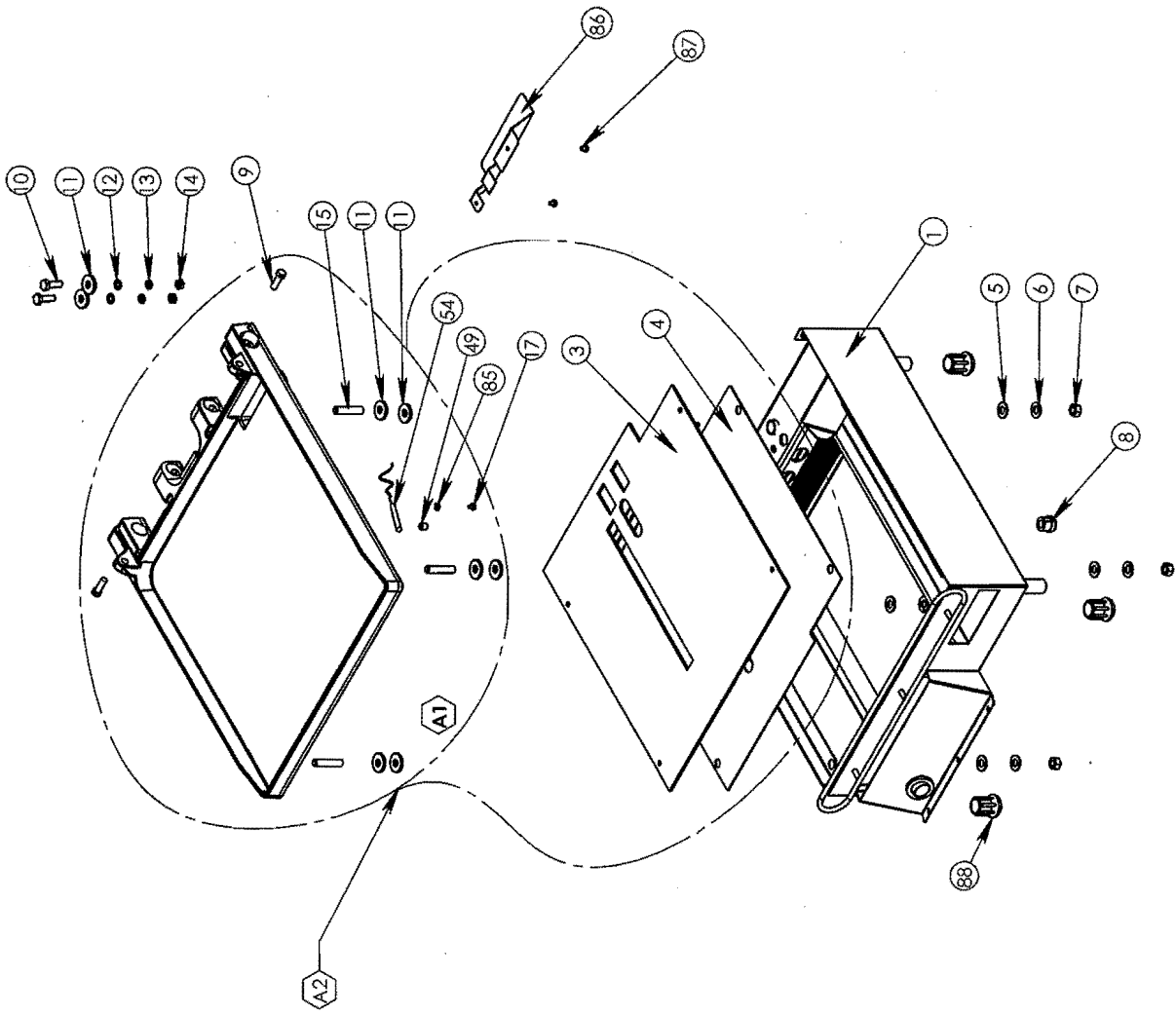
Vantage CS Troubleshoot Guide - Model #: CSD1515

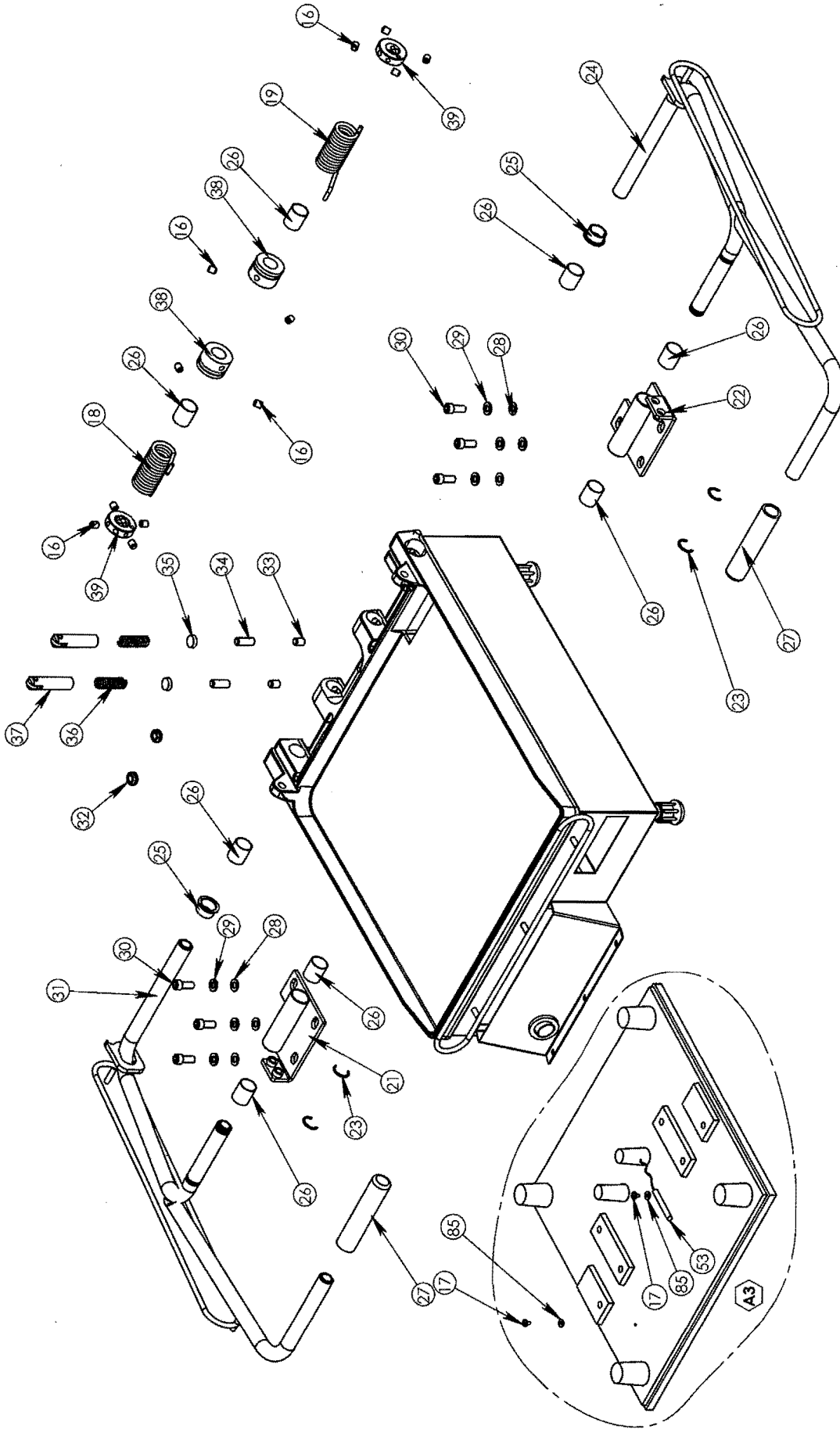
Problem	Cause	Action	Ref #
Power button on digital controller face is depressed but doesn't turn on.	1. Power cord is not plugged in.	1. Plug the power cord into wall receptacle and power button.	----
	2. Circuit breaker is tripped off in the site's breaker box.	2. Reset circuit breaker that the grill is plugged into. Depress Power Button to turn on.	-----
	3. Transformer has taken an electrical surge and is damaged.	3. Replace Transformer after you check secondary side of transformer. If working properly, you should receive 12vdc.	18
	4. Check voltage on the secondary side of the Transformer. If you read 12VDC then you are receiving voltage to the controller.	4. Replace controller. Controller should be on once the power button is depressed.	A8
	5. Possible blown fuse.	5. Replace fuse.	98
Digital controller's LED's are scrambled or randomly erratic. If when turning on, the display will first go to segment check	1. Possibly a component on the Digital controller is damaged.	1. Replace digital controller.	A8
	2. Control needs to reset.	2. While unit is on unplug unit, wait for 1 min. Then plug machine on again and depress the power button.	----
Digital controller is constantly beeping. No heat on either on left, right, upper, or lower platen.	Sensor in one of two zones lost it's continuity. Depress TEMP. While depressing TEMP depress either up or down arrow to locate error message PROB (zone 1, lower platen, zone 2 left upper platen, zone 3, right upper platen.) If occurred when depressing the up arrow	Disconnect probe and check for continuity (by using Ohm Meter) and replace. Do not cut and splice new sensor. Install new 2000 ohm RTD sensor to underside of the platen and reconnect to controller. Upper left and right sensor for replacement on upper	22 46

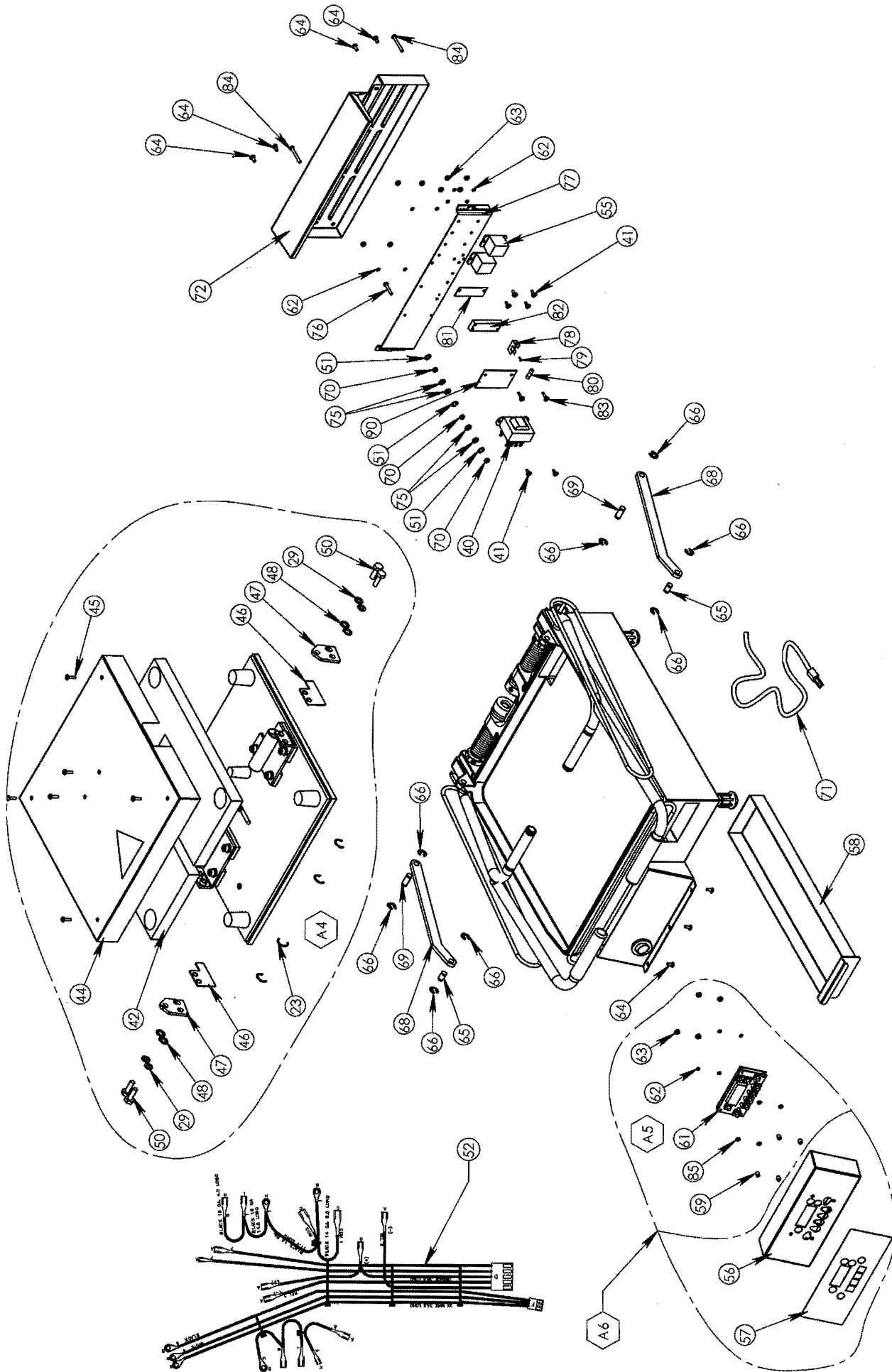
	indicates either the left or right platen has the open sensor or Probe.	platens, lower platen sensor for replacement for lower platen.	
Digital display shows PROB. No heat on any platen.	Sensor lost it's continuity as shown on a multi-meter.	Disconnect prob that is open (no continuity as shown on a multi-meter. Must replace sensor (RTD). Do not cut and splice new sensor. Install new 2000 ohm RTD sensor to under side of heat platen and reconnect to the controller.	41
Digital controller beeping and is overheating.	The mechanical relay on the switched side is not opening to regulate temperature. Hold TEMP button then depress either the down or up arrow (zone 1, lower platen, zone 2, left upper platen and zone 3, right upper platen.) RLY will display on problem zone indicating the damage.	Replace the mechanical relay.	15
Either platen is not heating but the digital controller is on and appears to be functioning.	If the mechanical relay(s) on the coil side are receiving 12vdc indicates the controller is functioning properly. If there is no voltage on the switching side of the relay to the heaters, the relay is not working properly.	Replace the mechanical relay.	15
Beeper is not functioning.	Beeper has failed.	Replace control board.	A8
One of the three heater platens not close to set point.	The offset function in the controller's setting needs to be adjusted to achieve proper shade of toast.	Call (800) 624-6717 for instructions.	----
One heating zone is not reaching setpoint and another heater is overheating.	Sensors maybe crossed.	Make sure each sensor is connected to its prospective position on the terminal block and back to the controller.	----
Setpoint is reached but slightly off in temperature.	Offset may need to be calibrated and adjusted.	Call (800) 624-6717 for instructions.	----
Heater platen is overheating.	1. The mechanical Relay may be stuck in the closed position (zone 1, lower platen #1 labeled on this relay,	Use an Ohm meter for a continuity check must check at the cold pins of the heater (where	15

	<p>zone 2, left upper and zone 3, right upper).</p> <p>2. If you are receiving 12vdc on the coil of the relay, the controller is properly functioning.</p>	<p>the heater wire is brazed at the cold pin. This will eliminate any other failure before the heater element validating the loss off continuity at the source the heater element.</p>	
<p>Upper heater not coming down parallel to the lower platen.</p>	<p>Parallel lever not attached either in the rear out on the upper heater platen. Check to see if parallel leveler is connected on both sides. The retaining clip attached to pin may have come off.</p>	<p>Reconnect the pin and the retaining E-Clip.</p>	25
<p>Upper platen falling down or lost tension.</p>	<p>The springs have lost some tension.</p>	<p>Remove rear panel and adjust the retaining collars on shaft by winding the spring tighter. There are multiple set screws that need to be loosened in order to wind the spring tighter. Once proper tension is achieved, tighten all set screws to prevent tension loss.</p>	----

Vantage CS Part List - Model #: CSD1515







**PART LIST FOR THE
CSD1515**

ITEM#	DESCRIPTION MODEL CSD1515	PART NO.	PART NO.	QTY.
		120 VOLT	208 VOLT	
1	LOWER WRAP AROUND SHROUD ASSEMBLY	110115501	110115501	1
3	LOWER PLATEN INSULATION	110115542	110115542	1
4	COVER, LOWER PLATEN ASSEMBLY	110115508	110115508	1
5	WASHER, SAE 3/8	WSAE38	WSAE38	4
6	WASHER, 3/8 SPLIT LOCK	WL38	WL38	4
7	NUT, HEX 3/8-16	NH3816	NH3816	4
8	STRAIN RELIEF	MPSS168	MPSS168	1
9	STOP, HEX PIN	11018344037	11018344037	2
10	BOLT, HEX 1/4-20 x 1	BH14201	BH14201	2
11	WASHER HIGH-TEMP	C4401	C4401	10
12	WASHER, SAE 1/4	WSAE14	WSAE14	2
13	WASHER, SPLIT LOCK, 1/4	WL14	WL14	2
14	NUT, HEX 1/4-20	NH1420	NH1420	2
15	SCREW, SET 3/8-16 X 1 3/4 CUP	SST3816134	SST3816134	4
16	SCREW SET KNURLED CUP POINT 5/16-18 x 3/8	SST5161838KN	SST5161838KN	12
17	SCREW, PAN HEAD PHILLIPS 6-32 x 1/4	SP63214	SP63214	3
18	COUNTER BALANCE SPRING LEFT HAND	1101023154L	1101023154L	1
19	COUNTER BALANCE SPRING RIGHT HAND	1101023154R	1101023154R	1
21	CLEVIS ASSEMBLY LEFT HAND	110115503	110115503	1
22	CLEVIS ASSEMBLY RIGHT HAND	110115504	110115504	1
23	E-CLIP, RETAINING 3/4 LOW PROFILE	LCC3478	LCC3478	4
24	HANDLE RIGHT ASSEMBLY	110115521	110115521	1
25	BUSHING, FLANGED TEFLON .75 I.D. x .875 O.D. x .500 LONG	110115563	110115563	2
26	BUSHING, TEFLON, 3/4 ID X .875 X 1 LONG	110115541	110115541	8
27	GRIP, HANDLE	110901168	110901168	2
28	WASHER, SAE 5/16	WSAE516	WSAE516	6
29	WASHER, 5/16 SPLIT LOCK	WL516	WL516	10
30	SCREW, SOCKET HD 5/16-18X3/4	SSH5161834	SSH5161834	6
31	HANDLE LEFT ASSEMBLY	110115522	110115522	1
32	GROMMET	110115554	110115554	2
33	SCREW, SET 3/8-16X1/2 CUP	SST381612	SST381612	2
34	SCREW, SET 3/8-16X1 CUP POINT	SST38161	SST38161	S
35	TUBBING PAD	110115531	110115531	2
36	SPRING, DETENT	110115555	110115555	2
37	PLUNGER ASSEMBLY	110115544	110115544	2
38	HANDLE HOLDER	110115530	110115530	2
39	HANDLE SPRING ADJUSTING COLLAR	110115528	110115528	2
40	TRANSFORMER	11096975	11096975	1
41	SCREW, PHILLIPS PAN HEAD 6-32 x 3/8	SP63238	SP63238	6
42	INSULATION, UPPER PLATEN	110888254	110888254	1
44	UPPER SHROUD	110121721	110121721	1
45	SCREW, SLOTTED PAN HEAD 10-24 x 5/8 STAINLESS STEEL	SPS102458S	SPS102458S	6
46	UPPER LEVELING SHIM	110115557	110115557	2
47	UPPER LEVELING BRACKET	110115510	110115510	2
48	WASHER, INTERNAL TOOTH LOCK 5/16	WLIT516	WLIT516	4
49	SCREW, SET 5/16-18-X1/2	SST5161812	SST5161812	1
50	BOLT HEX HEAD 5/16-18 x 1 STAINLESS STEEL	BH516181S	BH516181S	4
51	WASHER, INTERNAL TOOTH LOCK #8	WLIT8	WLIT8	3
52	WIRE HARNESS	11017636050	11017636050	1
53	RTD SENSOR	1108881101	1108881101	1
54	RTD SENSOR	1108881102	1108881102	1
55	RELAY	110942520	110942520	2
56	HOUSING, INSTRUMENT	11017636011	11017636011	1
57	OVERLAY	OCSD1515	OCSD1515	1
58	GREASE TRAY ASSEMBLY	110115505	110115505	1
59	NYLON SPACER 1/4 x .141 x 9/32	11090109	11090109	4
61	DIGITAL CONTROL	110171433052	110171433052	1
62	WASHER, INTERNAL TOOTH LOCK #6	WLIT6	WLIT6	12
63	HEX NUT 6-32	NH632	NH632	12
64	SCREW, PAN HEAD PHILLIPS 8-32 x 3/8 STAINLESS STEEL	SP83238S	SP83238S	7
65	PIN, PIVOT FRONT	11017088865	11017088865	2
66	RETAINING RING	11017088867	11017088867	8
68	TOP LINK	110115508	110115508	2
69	PIN, PIVOT BACK	11017088866	11017088866	2
70	NUT, HEX 8-32	NH832	NH832	3
71	POWER CORD	1101591174	110969175	1
72	BACK COVER	110115562	110115562	1
75	WASHER, SAE #8	WSAE8	WSAE8	4
76	SCREW, PAN HEAD PHILLIPS 8-32 x 1.0	SP8321	SP8321	1
77	MOUNTING BRACKET ASSY	110115559	110115559	1
78	FUSE HOLDER 1 AMP	MPPF708	MPPF708	1
79	SCREW, PAN HEAD PHILLIPS 2-56 x 1/4	SP25614	SP25614	1
80	FUSE BUSS 1 AMP	MPPF701R	MPPF701R	1

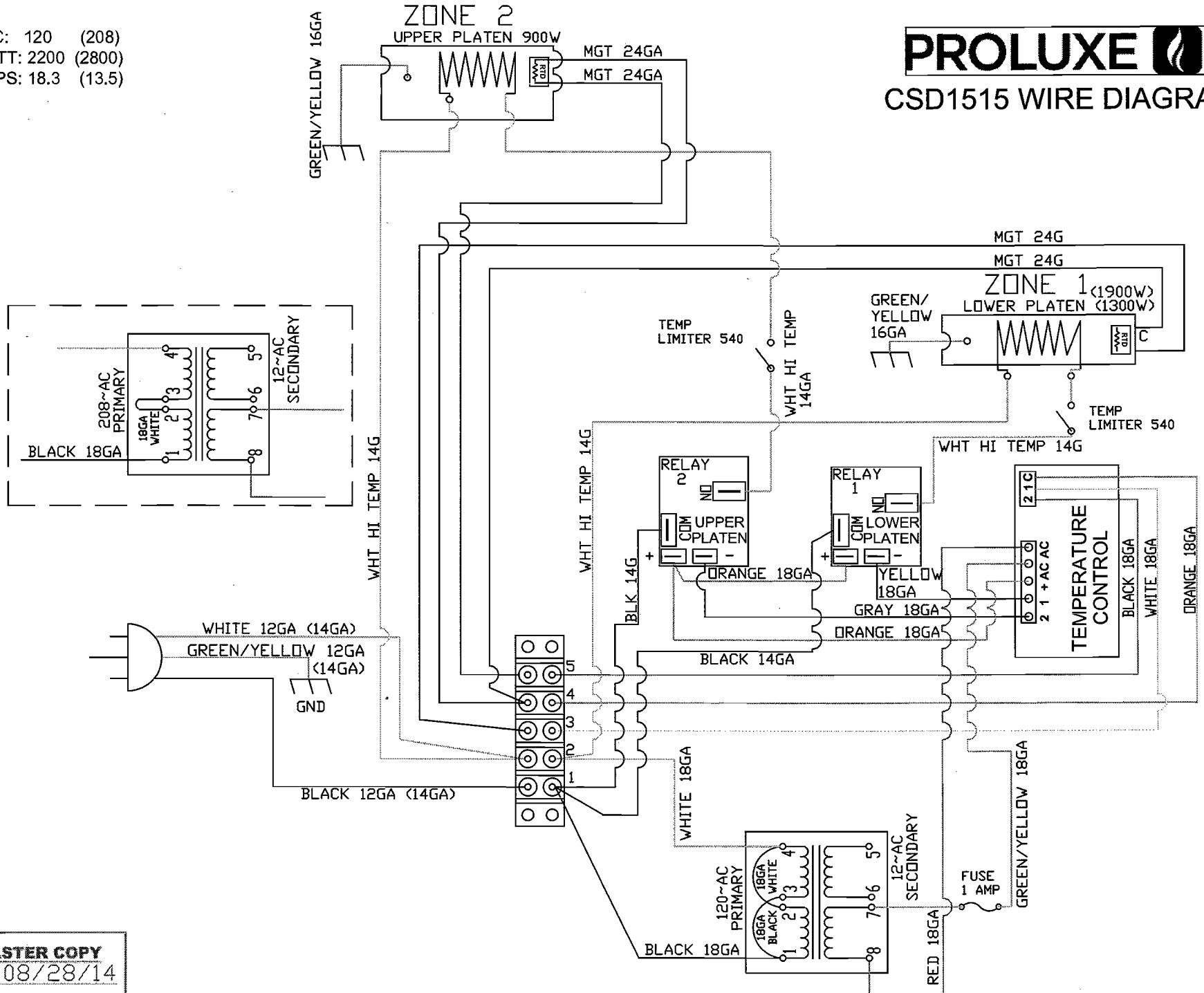
**PART LIST FOR THE
CSD1515**

ITEM#	DESCRIPTION MODEL CSD1515	PART NO.	PART NO.	QTY.
		120 VOLT	208 VOLT	
81	MARKER STRIP #5	MS6015	MS6015	1
82	TERMINAL BLOCK #5	6015	6015	1
83	SCREW, PAN HEAD PHILLIPS 6-32 x 5/8	SP63258	SP63258	2
84	SCREW, PAN HEAD PHILLIPS 8-32 x 1-1/2 STAINLESS STEEL	SP832112S	SP832112S	2
85	WASHER, STEEL .311 O.D	311150019	311150019	4
86	COVER, HEATER ELEMENT	110115564	110115564	1
87	SCREW, PAN HD 6-32X1/4 SELF TAPPING	SP63214ST	SP63214ST	2
88	FEET, RUBBER 3/4	11016546469	11016546469	4
89	MANUAL, CSD1515R	MCSD1515R	MCSD1515R	1
90	TRANSFORMER INSULATION	1101159180	1101159180	1
A1	LOWER PLATEN WITH WIRING	1101155207	1101155209	1
A2	LOWER PLATEN ASSEMBLY	1101155116	1101155118	1
A3	UPPER PLATEN WITH WIRING	1101217201	1101217202	1
A4	UPPER PLATEN ASSEMBLY	1101217101	1101217102	1
A5	KITTED, CONTROL TEMPERATURE WITH INSTURCTIONS	110171433052K	110171433052K	1
A6	KITTED, CONTROLLER TEMPERATURE ASSEMBLY	11017143352K	11017143352K	1

VAC: 120 (208)
 WATT: 2200 (2800)
 AMPS: 18.3 (13.5)

PROLUXE™

CSD1515 WIRE DIAGRAM



MASTER COPY
 Date 08/28/14

Proluxe warrants all products manufactured by it against defects in workmanship or materials from the date of purchase for a period of 1 year on parts and labor. This warranty applies to only equipment purchased and used in the United States.

Warranty period shall begin when equipment ships. Warranty travel will only be covered for 60 miles.

ALL WARRANTY SERVICE CALLS MUST BE APPROVED BY PROLUXE. IF THIS PROCEDURE IS NOT FOLLOWED, WARRANTY SERVICE WILL NOT BE COVERED. WARRANTY SERVICE WILL BE PAID ON STRAIGHT TIME, OVERTIME WILL NOT BE COVERED.

Service Calls

Contact our factory to obtain warranty service. Proluxe must issue a return authorization number, and call tag, or find the name and location of a Factory Authorized Service Center nearest you. When calling for service, please furnish the model number, serial number, and a description of the problem.

EXCLUSIONS

The warranties provided by Proluxe DO NOT apply to the following:

- Damage due to misuse, abuse, alteration, or accident.
- Improper or unauthorized repairs.
- Submerged in water.
- Damaged in shipment.

- Equipment exported to foreign countries.

Special Order Equipment and Accessories

Cannot be canceled and are not returnable unless defective within the terms of this warranty.

In no event shall Proluxe be liable for consequential damages arising out of the failure of any of its products if operated improperly or caused by normal wear or damaged by operator abuse.

Limited Lifetime Warranty on Heating Elements

If replacement is needed, Proluxe will send the new part at no charge but labor will not be covered unless the unit is still under the 1 year manufacturer warranty.

RETURNED MERCHANDISE POLICY

Should it become necessary to return any of the company's products, the following instructions must be adhered to: First, contact our customer service department for approval and a return authorization number. Please have the serial number of your item available at that time. All merchandise must be shipped freight prepaid by customer or service agency. Subject to the inspection of the product by the company, a restocking charge of 20% of the Net purchased price paid to Proluxe will be assessed. Merchandise may not be returned for credit without prior written approval of Proluxe.

Collect shipments will not be accepted. No returns after 60 days of original shipment date on machines. Purchased parts may not be returned after 30 days. If upon inspection by Proluxe or its authorized agent it is determined the equipment has not been used in an appropriate manner, has been modified, or has not been properly maintained, or has been subject to misuse, misapplication, neglect, abuse, accident, unauthorized modification, damage during transit, delivery, fire, flood, act or war, riot or act of God, then this warranty shall be deemed null and void.

TERMS & CONDITIONS

1. Price List prices are suggested retail prices and are shown in U.S. Dollars.

2. Terms of Payment: 1% 10 days, NET 30 days.

3. New Accounts: Satisfactory credit information must be provided before open account status can be extended.

Unless agreed otherwise, all shipments will be made C.O.D., Cash in advance.

4. Pricing: Prices, specifications, model numbers, capacities and accessories are subject to change without notice.

5. Freight/Routing: Method of shipment will be determined by Proluxe unless otherwise advised by purchaser.

6. Damaged Claims: All merchandise shipped at purchaser's risk. Inspection must be made by purchaser at time goods are received. If goods are damaged, the PURCHASER shall request that the agent of the transportation company make a written notation on the proper shipping documents immediately and then file a claim for damages.

Note: Goods damaged in shipping are non-returnable.

7. Returns: Machines may not be returned after 60 days. Purchased parts may not be returned after 30 days. A restocking fee of 20% will be assessed on non-warranty returns.

8. Taxes: Prices indicated herein DO NOT include State, Federal, Local or foreign taxes or duties, nor do they include fees, permits, insurance or other levies, all of which are the responsibility of the purchaser.

9. All orders are subject to acceptance by Proluxe.

10. Possession of this price list shall not be considered an offer to sell